

Fawn River Watershed

HUC #0405000108

Fawn River Watershed is located in LaGrange and Steuben Counties, Indiana and Branch and St. Joseph Counties, Michigan, encompassing 165,361 acres of drainage basin. Wetlands were once found in abundance in this watershed; many have since been drained for farmland due to their exceptionally fertile soils. Fawn River Watershed does not lack environmental charisma however, with over 26,000 acres of wetlands remaining, 2,000 lakes, and the Fawn River, an IDNR listed outstanding ecological resource and designated canoe route. The problems contributing to water impairments vary between the 9 subwatersheds but recent water sampling has identified elevated levels of *E. coli* in more populous areas while Nitrates and Phosphorus were more prominent in the more rural subwatersheds.

Size: 165,361 ac.

Subwatersheds: 9

Cities/Towns/Villages:

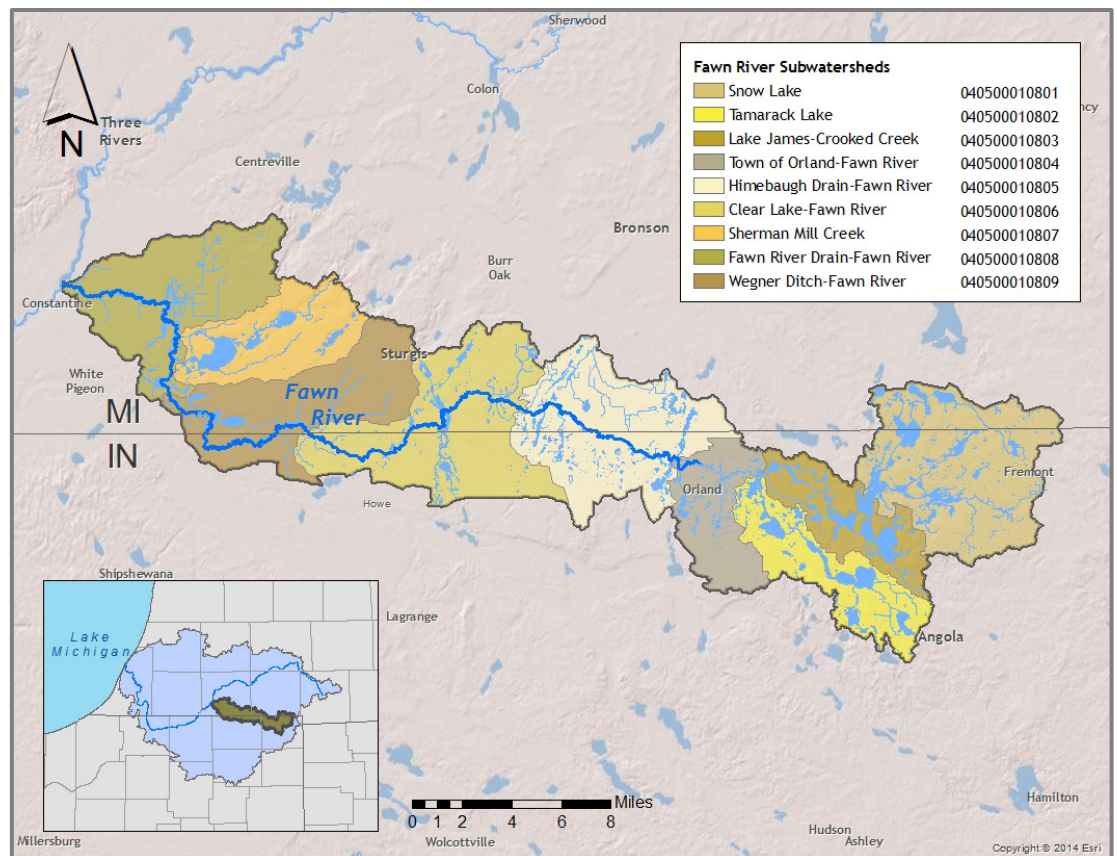
- IN - Angola
Fremont
Orland
- MI - Constantine
Sturgis

Population: 35,440

- IN ~ 16,000
- MI ~ 19,440

Landuse:

- Agriculture (59%)
- Wetlands (16%)
- Forest (8%)
- Developed (7%)



Notable Tributaries: 299 mi. of open channels

- Crooked Creek
- Sherman Mill Creek
- Wegner Ditch

Unique Resources

- Pokagon State Park
- Marsh Lake State Fish and Wildlife Area
- Fawn River designated canoe route

Environmental Concerns

- Agriculture-related runoff
- Lack of riparian and shoreline buffers
- Loss of wetlands